



**Carbon steel stock  $\geq$  50,000 tons**

*Strive to be the leader in the steel industry*  
**SINCE 2013**



### Corporate Mission

To Make Greater Contribution to Manufacturing Industry



### Corporate Vision

To Grow with manufacturing industry



### Strategic Target

To be a Global Leading High End Manufacturing Supporting Enterprise



### Corporate Sprite

Concentration, Devotion, Profession  
Be Conscientious and Responsible  
and Seek Excellent



### Business Concept

Standing on Sound Foundation;  
Persistence Makes Perfection



### Core Values

Tolerance, Cooperation,  
Efficiency, Responsibility





## ABOUT US

Is a partner manufacturing company specializing in H-beams, I-beams, channel steels, angle steels, and steel sheet piles. Our high-quality materials and products are widely used in construction equipment, petrochemical, and power industry equipment structures long-span steel bridge components, ships, machinery manufacturing frame structures. etc. We have established good cooperative relations with large domestic steel mills, and are the first-level agents of Jinxi Iron and Steel, Laiwu Iron and Steel, No.5 Iron and Steel, Anshan Iron and Steel, and Baotou Iron and Steel. Our products have been highly appraised by customers from Europe America, Middle East, AfriQca and Southeast.





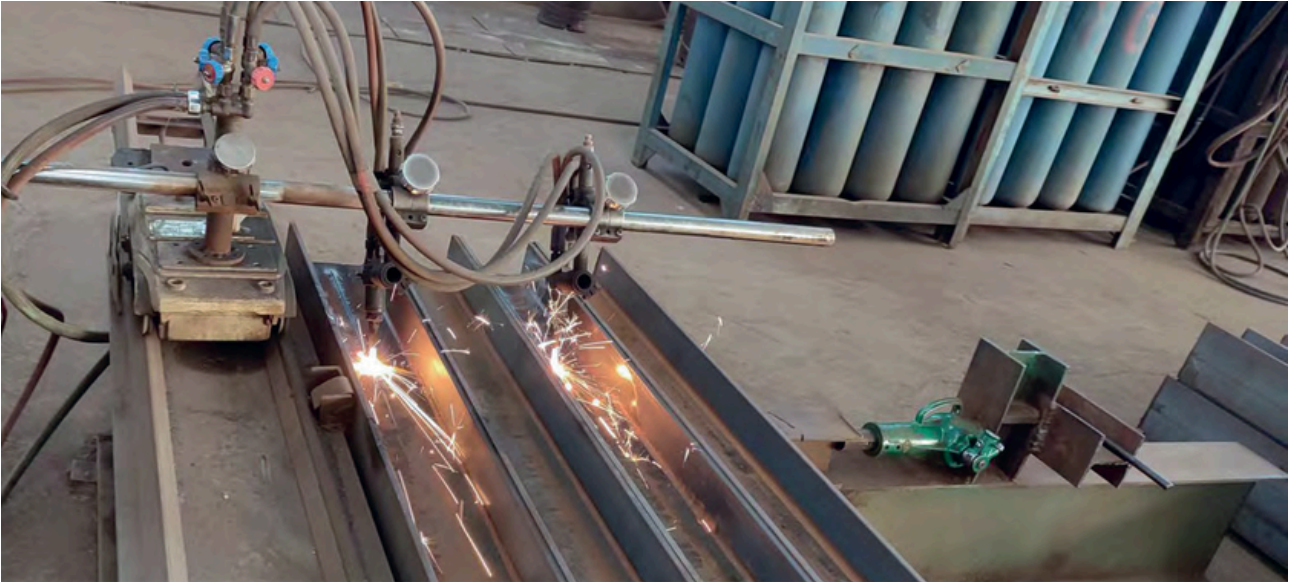
## FACTORY EQUIPMENT

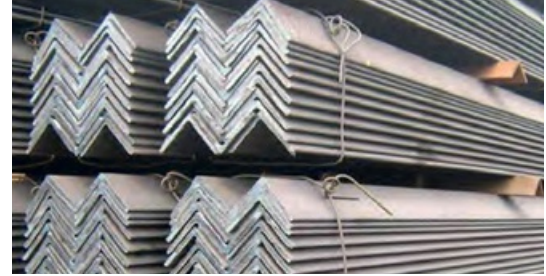


**2013** Year  
Founding time

**70000** M<sup>2</sup>  
Covers an area of

**50,000** Tons  
Carbon steel stock





## ANGLE BAR

Thickness(mm)	1mm-25.4mm
Length(m)	6/9/12m or as customer requirements
Width(mm)	15mm-250mm
Steel Grade	SS400,S355JR,S355JO,SS540,Q235,A36
Executive Standard	GB, ASTM, AISI, EN, JIS
Technique	Hot rolled
Application	Widely used in building structure and engineering construction, such as room beam,ship beam, industrial furnace, etc.



H BEAM	
Width X Height(mm)	100X50-1000X300mm
Flange Thickness(mm)	6mm-18mm
Web Thickness(mm)	7mm-35mm
Steel Grade	Q235,Q345,A36,SS400,S235JR,S355JR,Q345B,S355JO
Executive Standard	GB, JIS, ASTM, EN
Technique	Hot rolled,welded



## CHANNEL BAR

Thickness(mm)	3.8mm-12.5mm
Length(m)	6/9/12m or as customer requirements
Width(mm)	50mm-360mm
Steel Grade	A36, Q235, Q195
Executive Standard	GB, ASTM, AISI, EN, JIS
Technique	Hot rolled
Application	Channel steel is mainly used in building structure, curtain wall engineering, mechanical equipment and vehicle manufacturing.



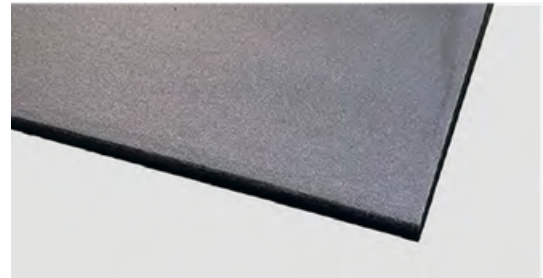
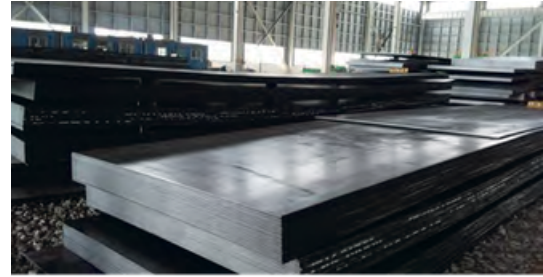
## I BEAM

Thickness(mm)	3.8mm-12.5mm
Length(m)	6/9/12m or as customer requirements
Width(mm)	50mm-630mm
Steel Grade	S235JR,S275JR,S355JR,SS400,A36
Executive Standard	GB, ASTM, AISI, EN, JIS
Technique	Hot rolled
Application	Support structure, structural profile, grille floor, baluster, overpass and working



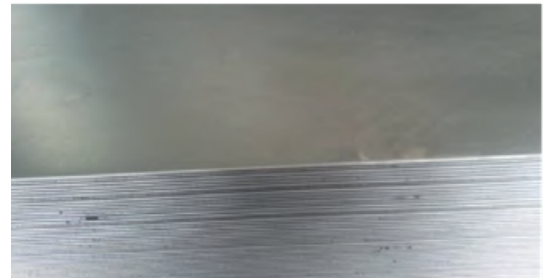
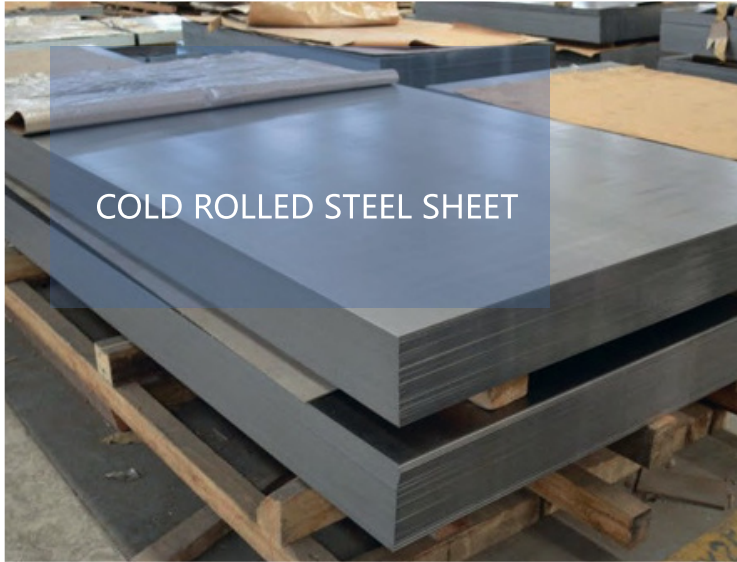
## STEEL SHEET PILE

Type	U/Z/W sheet pile
Length(m)	6/9/12m or as customer requirements
Steel Grade	GB standard,JIS standard,EN standard
Executive Standard	SY295,SY390,SYW295,SYW390,Q345,Q295PC, Q345P,Q390P,Q420,Q460
Production range	U400*100*10.5-600*210*18 linear pile: 500*9.5-500*12.7
Application	Steel sheet pile is a kind of steel structure with an edge linkage which can be combined freely to form a continuous and close soil or water retaining wall.



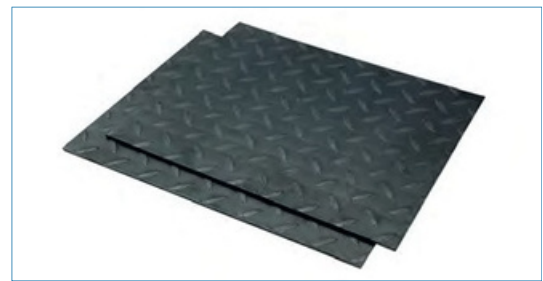
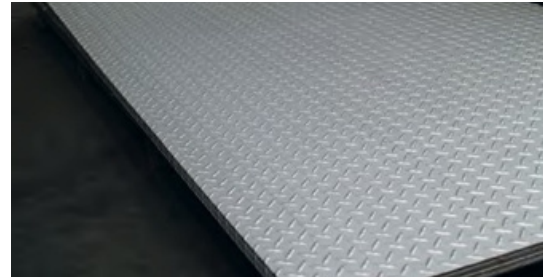
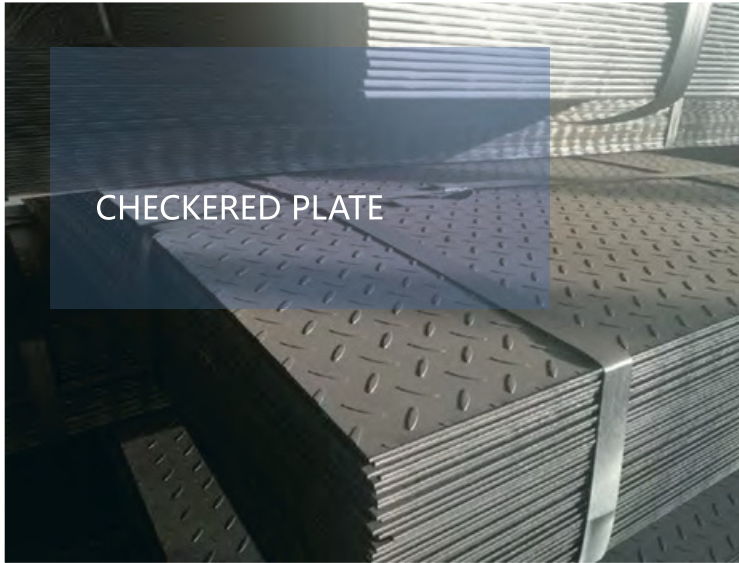
## HOT ROLLED STEEL SHEET

Thickness(mm)	6mm-400mm
Length(m)	1m-12m or according to customer's special request
Width(mm)	800mm-3300mm
Technique	Hot rolled
Certificate	BV,ISO,SGS,CE
Application	Construction,machinery,stamping parts,A variety of tools,band saw material,saw blade



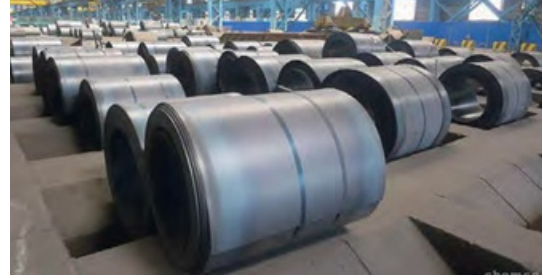
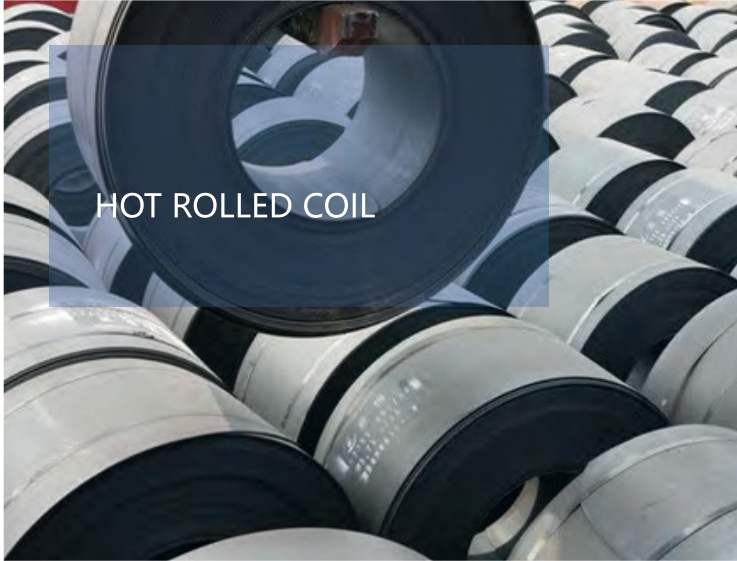
### COLD ROLLED STEEL SHEET

Thickness(mm)	0.12mm-2.0mm
Length(mm)	according to customer's special request
Width(mm)	750mm-1500mm or according to customer's special request
Technique	cold rolled
Standard	ASTM,BIN,JIS,BS,GB
Certificate	BV,ISO,SGS,CE



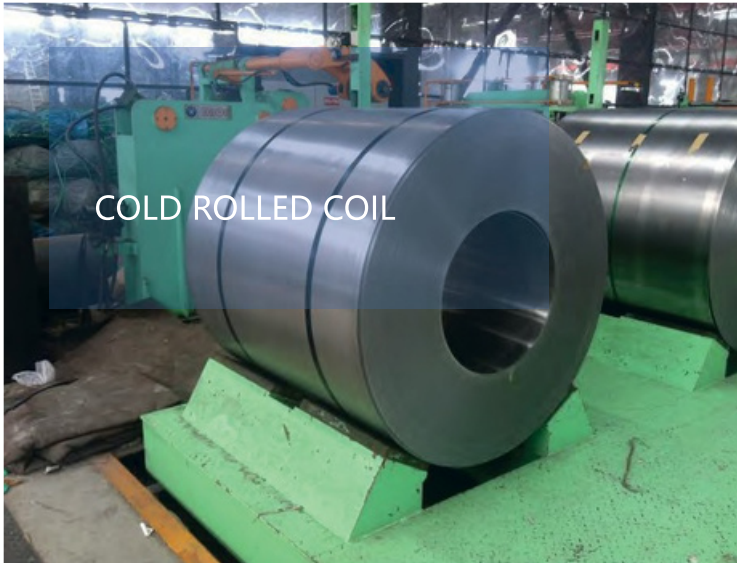
## CHECKERED PLATE

Thickness(mm)	2mm-10mm
Length(m)	1m-12m or according to customer's special request
Width(mm)	according to customer's special request
Steel Grade	Q195,Q235,Q345,S235JR,S275JR,S355JR
Certificate	BV,ISO,SGS,CE
Rhombic	17.7kg/m <sup>2</sup> -83.3kg/m <sup>2</sup>
Application	It is widely used in the fields of traffic, architecture, decoration, equipment surrounding floor board, machinery and shipbuilding.



## HOT ROLLED COIL

Thickness(mm)	0.8mm-16mm
Length(m)	In coil or according to customer's special request
Width(mm)	1000mm-2000mm
Technique	Hot rolled
Standard	ASTM,DIN,JIS,BS,GB/T
Product grade	Q235,Q195,Q345,SS400,A36,S255JR,S275,SHPC
Application	Production of steel for general frames and welded frames, used in the manufacture of iron frames, Bridges, ships and vehicles.

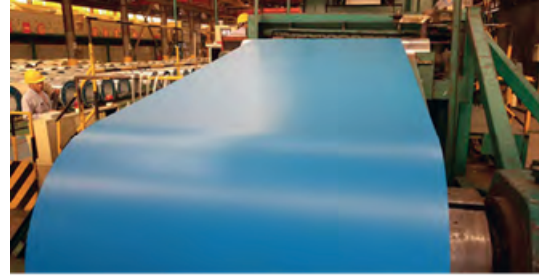


COLD ROLLED COIL



## COLD ROLLED COIL

Thickness(mm)	0.12mm-2.2mm
Length(m)	In coil or according to customer's special request
Width(mm)	32mm-1500mm
Technique	Cold rolled
Standard	ASTM,DIN,JIS,BS,GB/T
Certificate	BV,ISO,SGS,CE
Application	Cold rolled steel sheet has superb sheet shape and surface quality with good flatness and surface finish.The surface of the cold sheet is clean and bright and easy for coating.



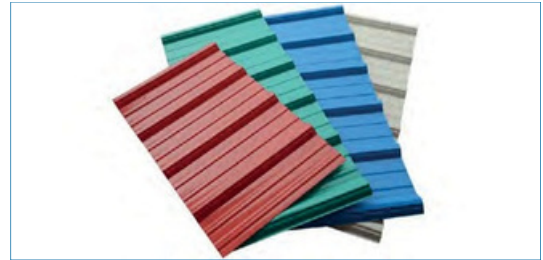
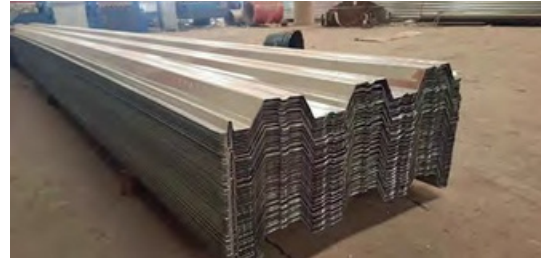
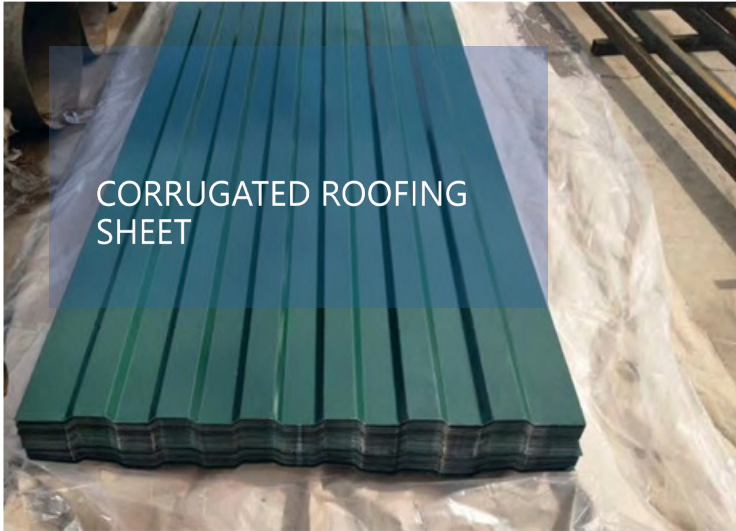
Color reference is based on lauer color card RAL. The following colors are for reference only. Due to limited space, not all of them are listed.

ral 1000 Green beige	ral 1001 Beige	ral 1002 Sand yellow	ral 1003 Signal yellow	ral 1004 Golden yellow	ral 1005 Honey yellow	ral 1006 Maize yellow
ral 1011 Brown beige	ral 1012 Lemmon yellow	ral 1013 Oyster white	ral 1014 Ivory	ral 1015 Light ivory	ral 1016 Sulfur yellow	ral 1017 Saffron yellow
ral 1019 Gray beige	ral 1020 Olive yellow	ral 1021 Rape yellow	ral 1023 Traffic yellow	ral 1024 Ochre yellow	ral 1027 Curry	ral 1028 Melon yellow
ral 1033 Dahlia yellow	ral 1034 Pastel yellow	ral 2000 Yellow orange	ral 2001 Red orange	ral 2002 Vermilion	ral 2003 Pastel orange	ral 2004 Pure orange
ral 2009 Traffic orange	ral 2010 Signal orange	ral 2011 Deep orange	ral 2012 Salmon orange	ral 3000 Flame red	ral 3001 Signal red	ral 3002 Carmine red
ral 3004 Purple red	ral 3005 Wine red	ral 3007 Black red	ral 3009 Oxide red	ral 3011 Brown red	ral 3012 Beige red	ral 3013 Tomato red

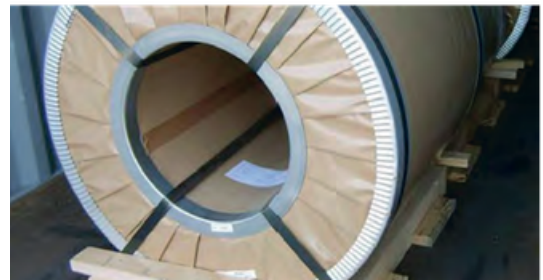
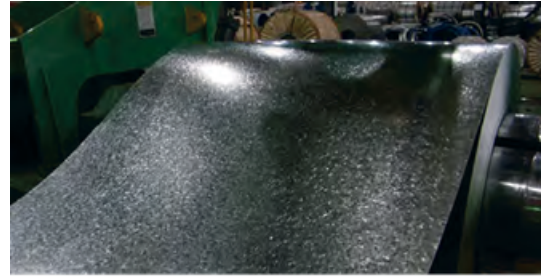
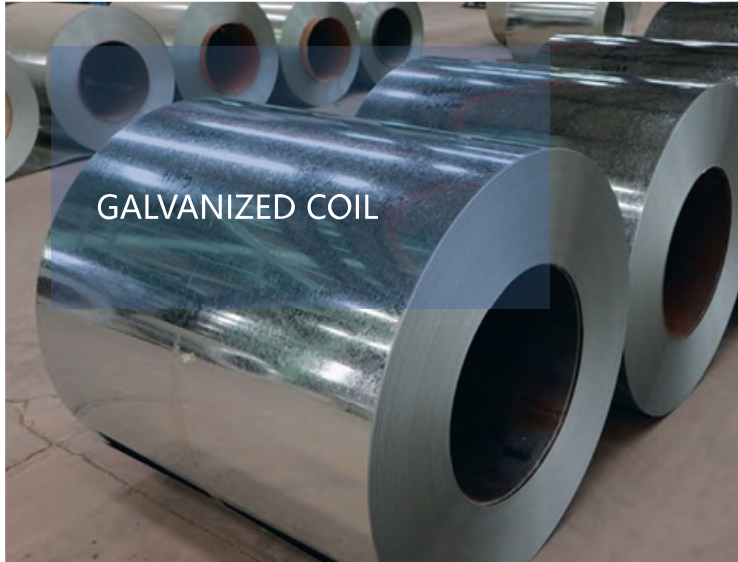
ral 3015 Light Pink	ral 3016 Coral red	ral 3017 Rose	ral 3018 Strawberry red	ral 3020 Traffic red	ral 3022 Salmon pink	ral 3027 Raspberry red
ral 4001 Red lilac	ral 4002 Red violet	ral 4003 Heather violet	ral 4004 Claret violet	ral 4005 Blue lilac	ral 4006 Traffic purple	ral 4007 Purple violet
ral 4009 Pastel violet	ral 5000 Violet blue	ral 5001 Green blue	ral 5002 Ultramarine blue	ral 5003 Sapphire blue	ral 5004 Black blue	ral 5005 Signal blue
ral 5008 Gray blue	ral 5009 Azure blue	ral 5010 Gentian blue	ral 5011 Steel blue	ral 5012 Light blue	ral 5013 Cobalt blue	ral 5014 Pigeon blue
ral 5017 Traffic blue	ral 5018 Turquoise blue	ral 5019 Capri blue	ral 5020 Ocean blue	ral 5021 Water blue	ral 5022 Night blue	ral 5023 Distant blue
ral 6000 Patina green	ral 6001 Emerald green	ral 6002 Leaf green	ral 6003 Olive green	ral 6004 Blue green	ral 6005 Moss green	ral 6006 Gray olive
ral 6006 Gray olive	ral 6009 Fir green	ral 6010 Grass green	ral 6011 Reseda green	ral 6012 Black green	ral 6013 Reed green	ral 6014 Yellow olive
ral 6016 Turquoise green	ral 6017 May green	ral 6018 Yellow green	ral 6019 Pastel green	ral 6020 Chrome green	ral 6021 Pale green	ral 6022 Olive drab
ral 6025 Fern green	ral 6026 Opal green	ral 6027 Light green	ral 6028 Pine green	ral 6029 Mint green	ral 6032 Signal green	ral 6033 Mint turquoise
ral 7000 Squirrel grey	ral 7001 Silver grey	ral 7002 Light green	ral 7003 Moss grey	ral 7004 Signal grey	ral 7005 Mouse grey	ral 7006 Beige grey
ral 7021 Black grey	ral 7022 Umbra grey	ral 7023 Concrete grey	ral 7024 Graphite grey	ral 7026 Granite grey	ral 7030 Stone grey	ral 7031 blue grey
ral 7042 Traffic grey A	ral 7043 Traffic grey B	ral 7044 Silk grey	ral 8000 Green brown	ral 8001 Ochre brown	ral 8002 Signal brown	ral 8003 Clay brown
ral 8007 Fawn brown	ral 8008 Olive brown	ral 8011 Nut brown	ral 8012 Red brown	ral 8014 Sepia brown	ral 8015 Chestnut brown	ral 8016 Mahogany brown
ral 8019 Grey brown	ral 8022 Black brown	ral 8023 Orange brown	ral 8024 Beige brown	ral 8028 Terra brown	ral 9001 Cream	ral 9002 Greedy white

## PPGI

Thickness(mm)	0.12-2.0mm
Grade	TDX51D+Z,TDX51D+AZ
Width(mm)	600-1500mm
Color	Based on RAL or clients' sample
Paint Top(microns)	15-35microns
Paint Back(microns)	5-10microns
Inner Diameter (mm)	508/610mm
Coating	AZ30-AZ160,Z50-Z140g/m <sup>2</sup>
Temper	Full hard, half hard, soft
Type of Coating process	Front: double coated&double drying Back:double coated&double drying single-coated&double drying
Coating types	Top paint: PVDF, HDP,SMP, PE, PU PVDF, HDP, SMP, PE, PU Primer paint: Polyurethane, Epoxy, PE Back paint: Epoxy, Modified polyester
Application	Especially in home appliances, the sheets are mainly used as the side door plate of refrigerators, and air conditioners, freezers, and washing machine. Using galvanized sheets or galvalume sheet as the substrate, color coated sheet is made by first going through surface pretreatment, then coating for one or more layers, and finally baking and cooling.

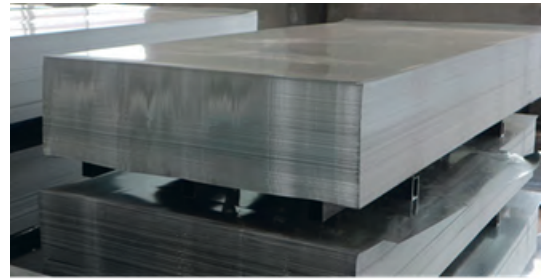


CORRUGATED ROOFING SHEET	
Raw Material	GI, GL or PPGI
Executive Standard	GB/JIS/ASTM
Thickness(mm)	0.12-0.6mm
Length(m)	As customer's requirement.
Zinc coating(g/m <sup>2</sup> )	Z30-Z140 AZ20-AZ160
Surface	Chromated/ Oiled/Dry
Spangle	Regular/Minimized/Big Spangle
Pallet weight	2-4mt



## GALVANIZED COIL

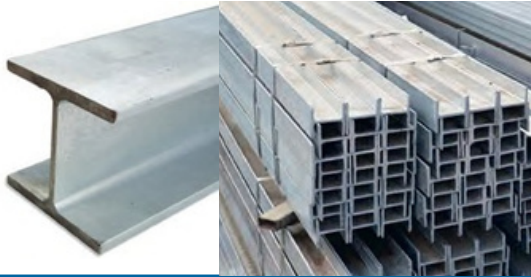
Thickness(mm)	0.12-2.5mm
Zinc Coating(g/m <sup>2</sup> )	30-600g/m <sup>2</sup>
Width(mm)	100-1250mm or according to customer's special request
Inner Diameter(mm)	508/610mm
Surface Structure	Regular spangle, Minimal Spangle, Zero Spangle, Big Spangle
Surface Treatment	Oiled, and chromated, Anti fingerprints
Coil Weight	1-25mt



## GALVANIZED SHEET

Thickness(mm)	0.12mm-2.0mm
Zinc Coating (g/m <sup>2</sup> )	30-600g/m <sup>2</sup>
Width(mm)	750mm-1500mm or according to customer's special request
Surface Structure	Regular spangle, Minimal Spangle, Zero Spangle, Big Spangle
Surface Treatment	Oiled, and chromated, Anti finger prints

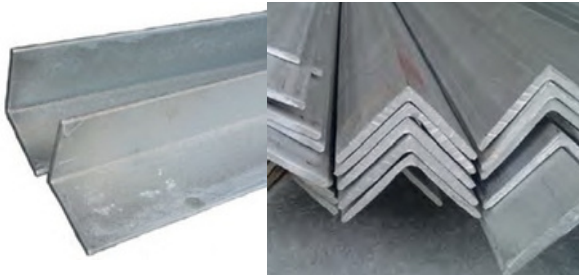
OTHER GALVANIZED  
PRODUCTS



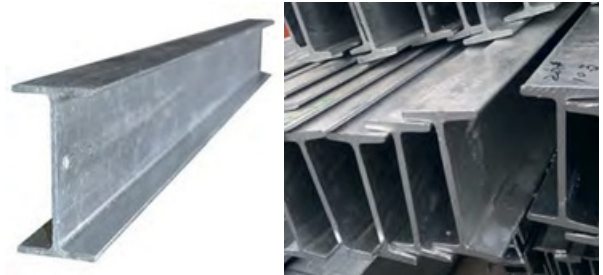
Galvanized H beam



Galvanized channel bar



Galvanized angle bar



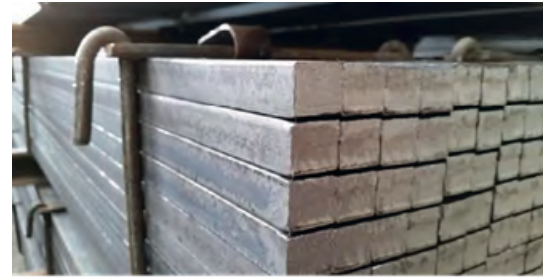
Galvanized I beam



Galvanized square pipe



Galvanized steel flat bar



## SQUARE BAR

Length(mm)	5mm-150mm
Width(mm)	5mm-150mm
Weight (kg/m)	0.196kg/m-176.6kg/m
Steel Grade	SS400、S235JR、S275JR、A36、Q235
Executive Standard	ASTM /GB /JIS/EN
Technique	Hot rolled square steel/cold drawn square steel
Tolerance	As the standard or as your requirement
Application	Construction, auto parts, ship parts, mechanical parts, etc



ROUND BAR

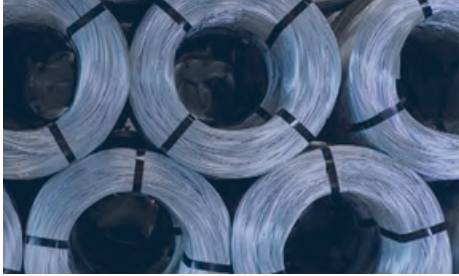


ROUND BAR	
Diameter(mm)	5.5mm-250mm
Weight (kg/m)	6-12m or in coil
Steel Grade	20#、45#、50#、Q345
Executive Standard	ASTM /GB /JIS/EN
Technique	Hot rolled
Tolerance	As the standard or as your requirement
Application	Construction, shipbuilding, machinery manufacturing, etc



## STEEL REBAR

Diameter(mm)	6mm-40mm
Length(mm)	6-12m or in coil
Steel Grade	A615 Gr40/60/75;BS 4449 Gr460,B500;GB HRB400; JIS G3112 SD390
Executive Standard	ASTM A615 /BS BS 4449 /GB HRB/ JIS G3112
Technique	Hot rolled
Tolerance	As the standard or as your requirement
Application	Building, construction, road, bridge,etc



## Hot-dip galvanized iron wire

Zinc coating	30-280g/m <sup>2</sup>
Packing	1-500kgs/coil, coil with plastic cloth inside and hessian outside or weave outside
Technique	Hot-dip galvanized iron wire is made with choice low carbon steel wire, through wire drawing, acid washing and rust removing, annealing and coiling.
Application	It' s mainly used in construction, handicrafts, woven wire mesh, express way fencing mesh, packaging of products and other daily uses.

## Electro galvanized iron wire

Zinc coating	10-25g/m <sup>2</sup>
Packing	1-500kgs/coil, coil with plastic film inside and hessian cloth outside or weave cloth outside
Technique	Electro galvanized iron wire is made with choice mild steel, through wire drawing, wire galvanizing and other processes.
Application	Electro galvanized iron wire has the characteristics of thick zinc coating, good corrosion resistance, firm zinc coating, etc. It' s mainly used in construction, express way fencing, binding of flowers and wire mesh weaving.



## STEEL WIRE ROD

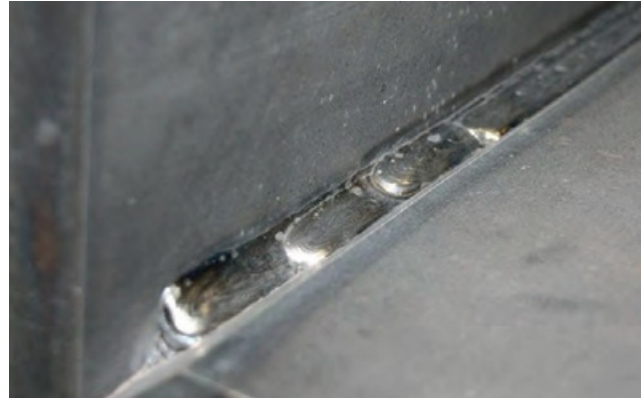
Diameter(mm)	5.5mm-34mm
Length(mm)	in coil
Steel Grade	SAE1008-SAE1022,Q195,Q235,LY,H08A,XER70S-6,S45C,S20C
Executive Standard	Q195,Q235,SAE1008,SAE1006
Technique	Hot rolled
Tolerance 负差	As the standard or as your requirement
Application	Building, construction, road, bridge,etc

## PROCESSING



Range of application(mm)

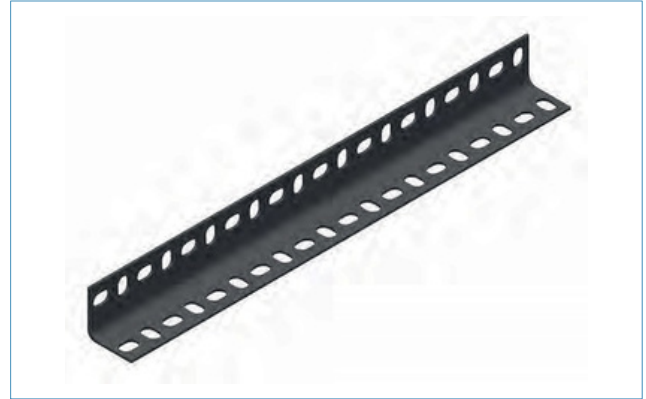
H beam, steel grating, T beam, etc. (as customer's requirement.)



Range of application(mm)

Flat bar, steel plate, steel pipe, etc. (as customer's requirement.)





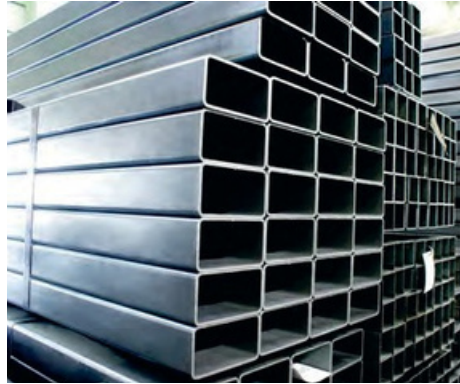
Range of application(mm)

Angle bar,flat bar,C section steel,channel steel,etc.(as customer's requirement.)



Range of application(mm)

Angle bar,flat bar,channel steel,etc.(as customer's requirement.)



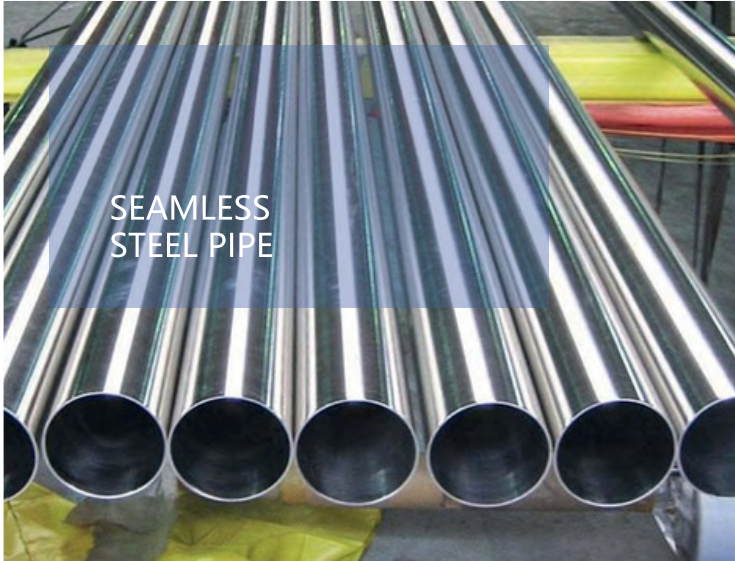
## RECTANGULAR STEEL TUBE

Thickness(mm)	0.6 - 50 mm
Length(m)	5.8m-12m
Outer DIA(mm)	15x15mm-600x600mm
Steel Grade	Q195,Q235,Q345,S235JR,S275JR,S355JR
Executive Standard	ASTM A500,EN 10219,EN 10210,GB6728,etc.
Application	Steel structure, buildings, etc.
End Treatment	Plain, Or Weld With Flanges Plastic Caps And Steel Rings Can Be Provided If Possible
Surface Treatment	1.Black,Pre-galvanized 2.Oiled,powder coating 3.Galvanized as your requirement  PS:Pre galvanized steel pipe: 60-150g/m <sup>2</sup> ;Hot dipped galvanized steel pipe: 200-400g/m <sup>2</sup>



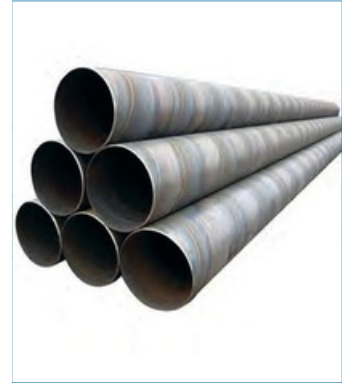
## ROUND PIPE

Thickness(mm)	0.3mm-6.0mm			
Length(m)	5.8m-12m			
Outer DIA(mm)	11.8mm-76mm			
Steel Grade	Q195,Q235,Q345,S235JRH,S275JOH,S355JOH,ETC			
Executive Standard	BS1387 ASTM A53,ASTM A500,GB3091,GB/T3091			
Application	Widely used in water, gas, air, oil and other liquids transport			
Kinds	black anneal pipes	galvanized pipe	brightpipes	cold hard pipes
Surface Treatment	1.Oiled,powder coating 2.Galvanized as your requirement PS:Pre galvanized steel pipe: 10-300g/m2;Hot dipped galvanized steel pipe: 200-600g/m2			



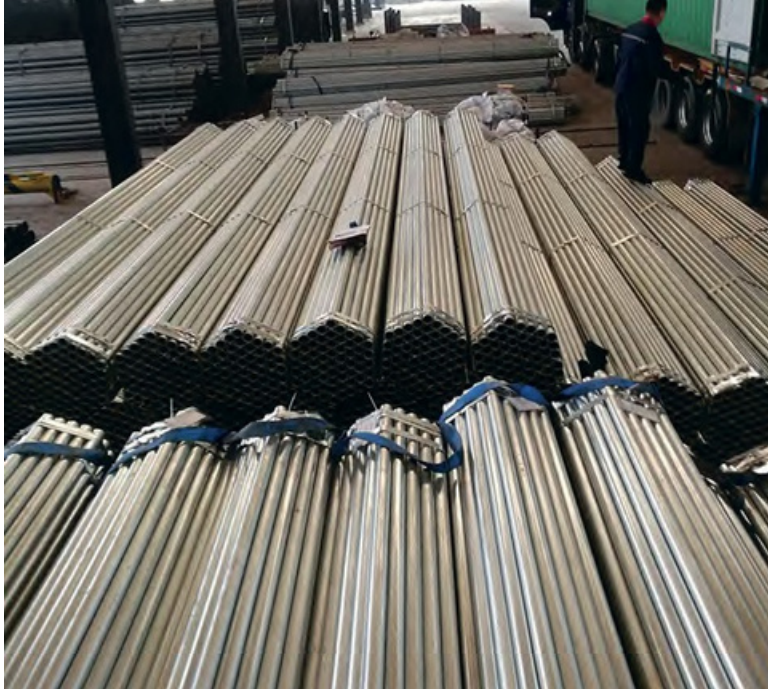
## SEAMLESS STEEL PIPE

Thickness(mm)	1.73mm-30.96mm
Length(m)	5.8m-12m
Outer DIA(mm)	10.3mm-610mm
Steel Grade	10,20,Q235B,B,x42,x46,x52,x56,x60,x65,x70,H40 J55,K55,P235TR2,P265TR2,P235GH,P265GH,S235JRH,S355J0H,S355J2H etc.
Executive Standard	API SPEC 5L,API SPEC 5CT,ASTM A53,ASTM A106, ASTM A500,ASTM A795 DIN2440,EN10216,GB/T9711, GB/T8162,GB/T8163 ETC
Application	To be used for conveying gas,water and petroleum for coil and natural gas industries.



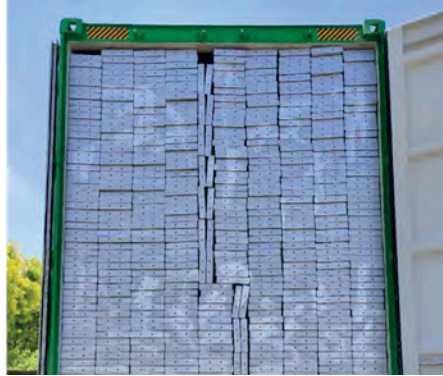
## SPIRAL SEAM PIPE

Thickness(mm)	6mm-25mm
Length(m)	12m
Outer DIA(mm)	219mm-3000mm
Steel Grade	A.B.X42,X46,X52,X56,X60,X70,L242,L450(etc)
Executive Standard	SY/T5037-2012 GB/T9711-2011
Application	Mainly used in water engineering,petrochemical industry,chemical industry, power industry,agricultural irrigation,urban construction.
Surface Treatment	Black, oil, Black Oil Surface Or Other Anti-corrosive Treatment 1.Black,Pre-galvanized 2.Oiled,powder coating 3.Galvanized as your requirement 4.Inner&outer with epoxy coating



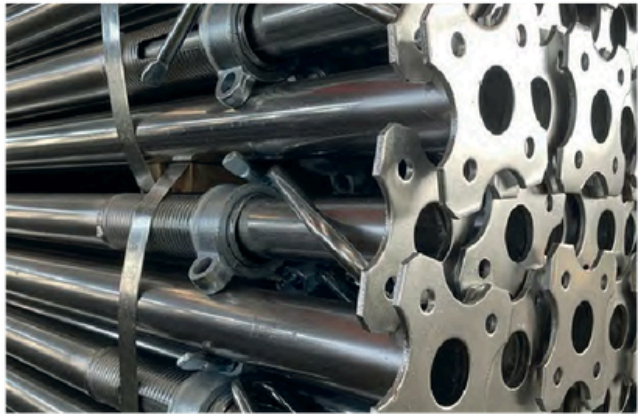
## Scaffolding Pipe

Outside Diameter(mm)	Steel Grade	Thickness(mm)	Standards	Maximum Loading Quantity (Total Pcs)	Surface Treatment	Length(mm)
38mm		4.0mm		1397	1.Hot-dipped Galvanized 2.Pre-Galvanized 3.Yellow/Black/Red Painted 4.Powder Coated 5.Anti-Rust Oil Coated	0.5/1/1.5/1.8/2/2.4/2.5/3/3.5/4/4.5/5/5.5/6/6.4 m (Other lengths can be cutted according to your requirement)
		5.0mm		1143		
48.3mm	S235GT	3.2mm	1.EN39 2.BS1139 3.MS1462 4.EN10215 5.EN10219	1281		
		4.0mm		1037		
60.3mm		2.5mm		1281		
		3.0mm		1098		
63.5mm		3.0mm		1037		
		4.0mm	793			
48.6mm	STK400	2.4mm	6.JIS G3444	1708		
	STK500			1708		



## Scaffolding Steel Plank

Steel Plank			Steel Plank with Hook/Catwalk			Surface Treatment
Width*Height*Thickness(mm)	Length(mm)	Weight(kg)	Width*Height*Thickness(mm)	Length(mm)	Weight(kg)	
210X45X1.2	4000	13.60	500X50X1.2	1829	15.50	1. Hot-dipped Galvanized 2. Pre-Galvanized
	3000	10.26	480X45X1.2	1829	13.50	
	2000	6.93	450X45X1.2	1829	13.00	
	1000	3.59	500X50X1.2	1219	12.50	
225X38X1.8	4000	13.60	480X45X1.2	1219	11.00	
	3000	10.26	450X45X1.2	1219	10.00	
	2000	6.93	420X45X1.2	1219	9.50	
230X60X1.8	2500	16.50	450X38X1.2	1219	12.50	
240X45X1.2	4000	14.87	420X45X1.2	1219	9.00	
	3000	11.23	330X50X1.2	1219	9.00	
	2000	7.59		1219	8.50	
	1000	3.94		1829	11.50	
250X50X1.2	4000	15.67		Note: 1. Embossing Marking: BS1139 or your brand name are OK 2. Steel Plank: Plain Stiffener, Box Stiffener, Trapezoid Stiffener 3. Special Width/Thickness/Length can be customized		
	3000	11.84				
	2000	8.00				
	1000	4.15				



### Adjustable Steel Prop (Light duty prop-spanish prop)

Min Height	Max Height	Inner tube	Outer tube	Tube Thk
0.6m	1.1m	40mm	48mm	1.5-2.5mm
0.8m	1.4m	40mm	48mm	1.5-2.5mm
1.6m	2.9m	40mm	48mm	1.5-2.5mm
1.8m	3.2m	40mm	48mm	1.5-2.5mm
2.0m	3.6m	40mm	48mm	1.5-2.5mm
2.2m	4.0m	40mm	48mm	1.5-2.5mm

### Adjustable Steel Prop (Light duty prop-Italian prop)

Min Height	Max Height	Inner tube	Outer tube	Tube Thk
1.6m	2.9m	48mm	56mm	1.5-2.75mm
1.8m	3.2m	48mm	56mm	1.5-2.75mm
2.0m	3.5m	48mm	56mm	1.5-2.75mm
2.0m	3.6m	48mm	56mm	1.5-2.75mm
2.2m	4.0m	48mm	56mm	1.5-2.75mm
2.2m	4.0m	40mm	48mm	1.5-2.5mm

### Adjustable Steel Prop (Heavy duty prop-middle east prop)

Min Height	Max Height	Inner tube	Outer tube	Tube Thk
1.6m	2.9m	48mm	60mm	1.6-4.0mm
1.8m	3.2m	48mm	60mm	1.6-4.0mm
2.0m	3.5m	48mm	60mm	1.6-4.0mm
2.0m	3.6m	48mm	60mm	1.6-4.0mm
2.2m	4.0m	48mm	60mm	1.6-4.0mm
3.0m	5.0m	48mm	60mm	1.6-4.0mm
3.5m	6.0m	48mm	60mm	1.6-4.0mm



+ 971 507040193



husnasales@pipecosteel.com



www.pipecosteel.com

